

# Vermont Center for Geographic Information

John E. Adams AICP  
House Committee on Commerce and Economic Development  
February 13, 2018





## **BUILD**

Vermont's Spatial Data  
Infrastructure  
(VSDI)



## **LEAD**

Development and  
use of Statewide  
Geographic Information  
System (VGIS)



## **EMPOWER**

Data analysis,  
visualization and  
informed decision making

**1968**  
Vermont Mapping Program  
(Tax Dept)

**1980**  
GIS Computer  
At UVM

**1974**  
Orthophotographs

**1989**  
Office of GIS  
(Agency of Admin)

**1992**  
Vermont Center for  
Geographic Information  
(17mb of data!)

**1997**  
1<sup>st</sup> VCGI Website

**2008**  
Enterprise  
GIS  
Consortium

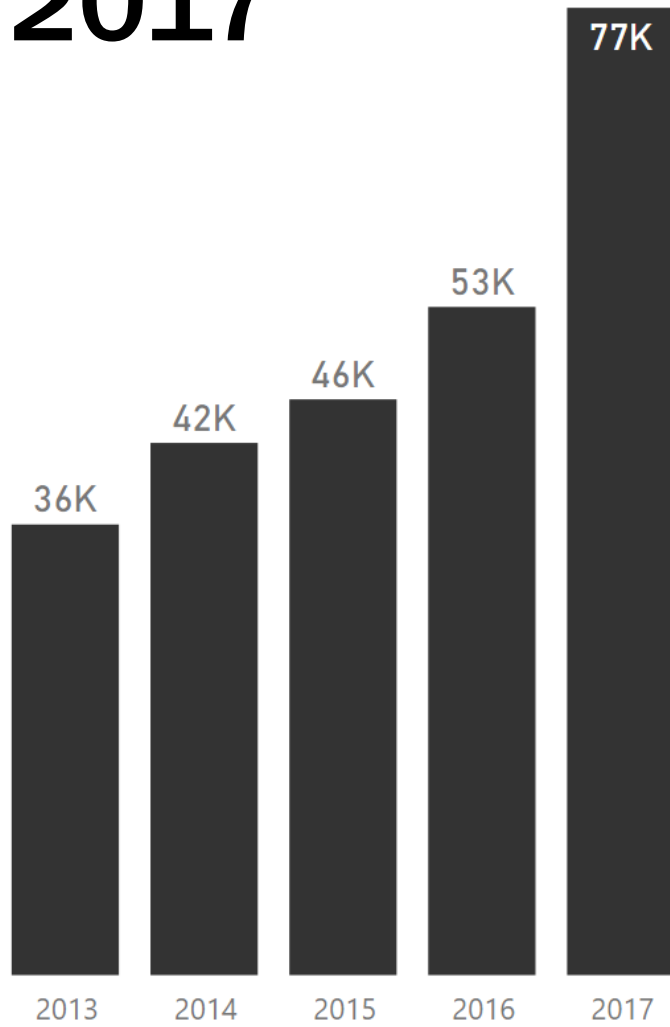
**2015**  
VCGI becomes  
Part of State Government

**2017**  
VCGI Staff join  
Agency of Digital Services

# 1992



# 2017



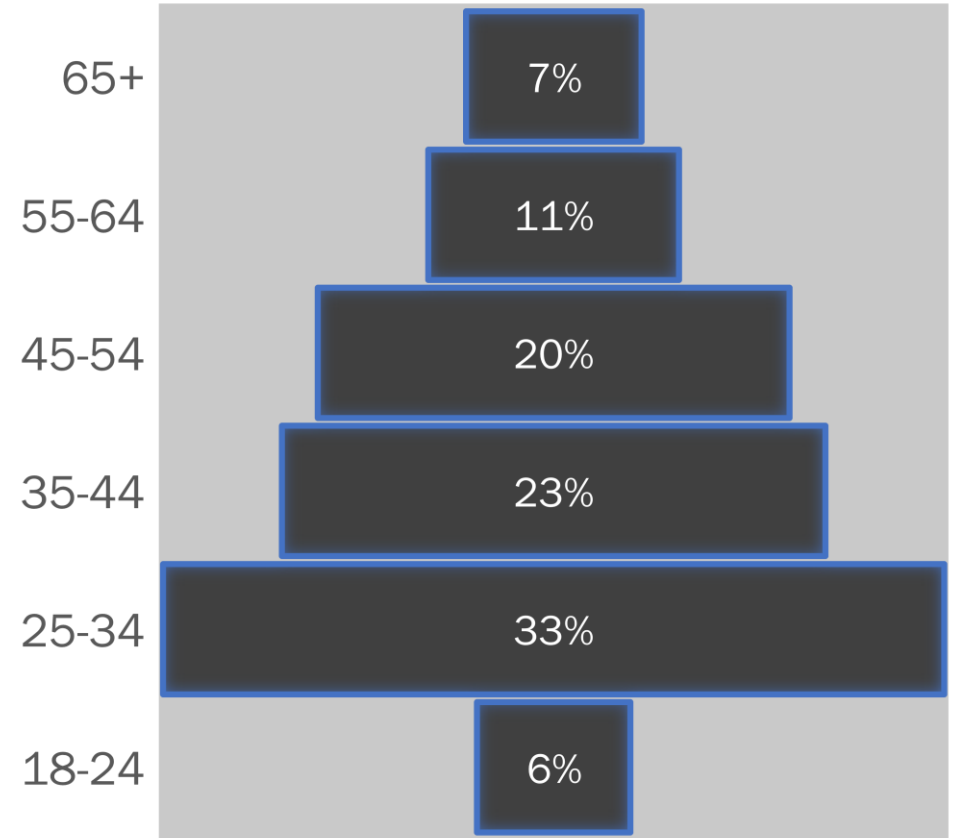
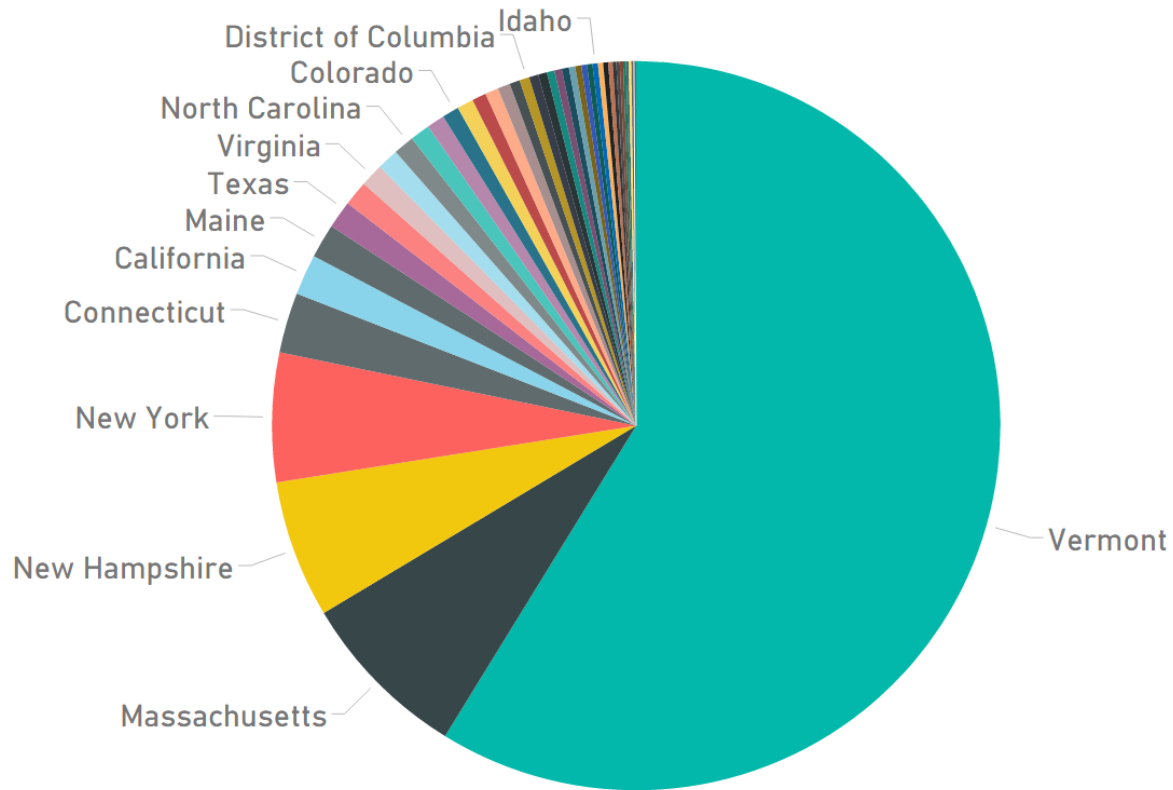
980  
available  
DATASETS

495  
thousand  
PAGEVIEWS

38.8  
million  
API REQUESTS

9  
terabytes  
DATA

# User Geography/Demographics





STATE OF VERMONT

# Vermont Open Geodata Portal

[DATA](#)

[WEB SERVICES](#)

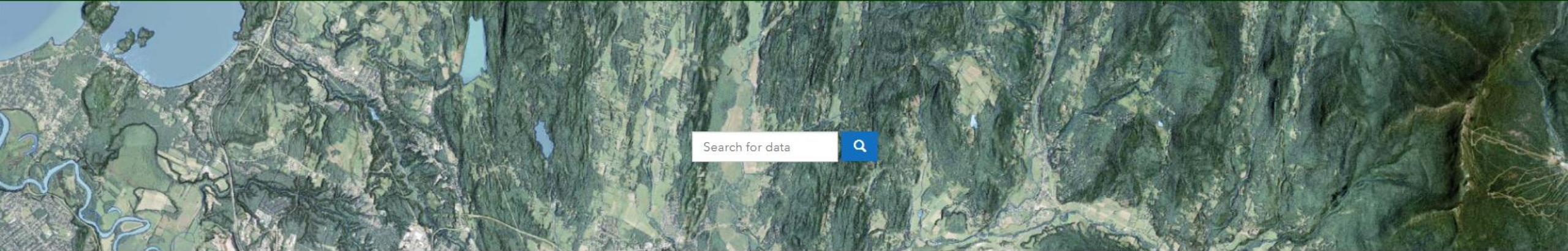
[APPLICATIONS](#)

[DEVELOPERS](#)

[CONTACT US](#)

[HELP](#)

[Sign In](#)



Agriculture



Basemap



Boundaries



Climate



Demographic +  
Economic

# DATA GOVERNANCE



**BOSTITCH**  
HEAVY DUTY STAPLER  
MODEL B300HDS  
Uses SB35 Staples  
To 30 Sheets To 60 Sheets To 100 Sheets

**heavy duty stapler**  
160 SHEET STAPLER  
HD Staple Size Sheet Capacity\*  
1/4" 2-25  
3/8" 25-60  
1/2" 40-90  
5/8" 75-120  
3/4" 90-160  
\*Capacity based on 200 paper weight.  
Do NOT use 1/4" standard staples.  
They will jam this stapler.

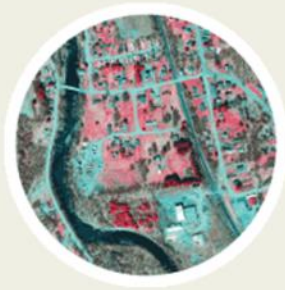
Swingline



# Web Services

Find web map services that allow you to stream basemaps, imagery, lidar, and other information directly into your web map or GIS desktop app.

**Popular Services:** [Best of Color](#) and [Black and White Imagery](#) | [Hillshade + Contours](#) | [Parcels](#)



## Imagery Services

Aerial Photos



## Elevation Services

DEMs, Contours, and Lidar



## Parcel Map Services

Municipal Parcel Boundaries



## More Services

Basemaps, Geocoding, etc.

**Life Cycle Policies:** [VCGI Policy](#) | [ANR Policy](#)





# SOLAR POTENTIAL



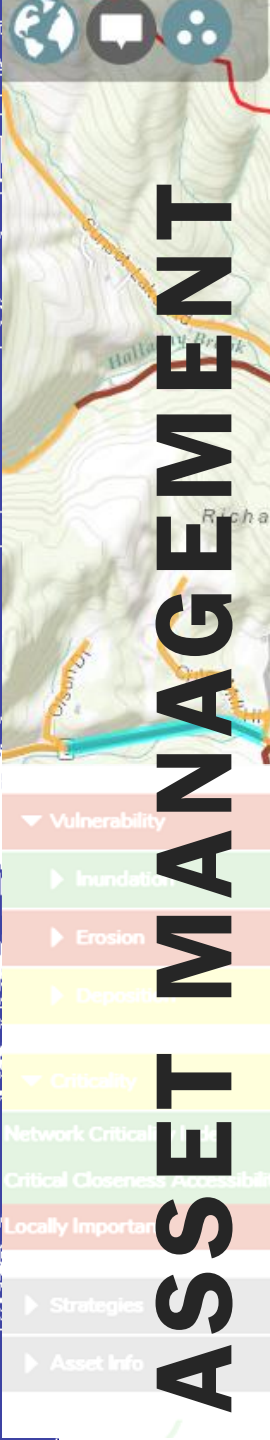
# ARCHEOLOGY



# WATER QUALITY



# SERVICE DISTRICTS



# ASSET MANAGEMENT

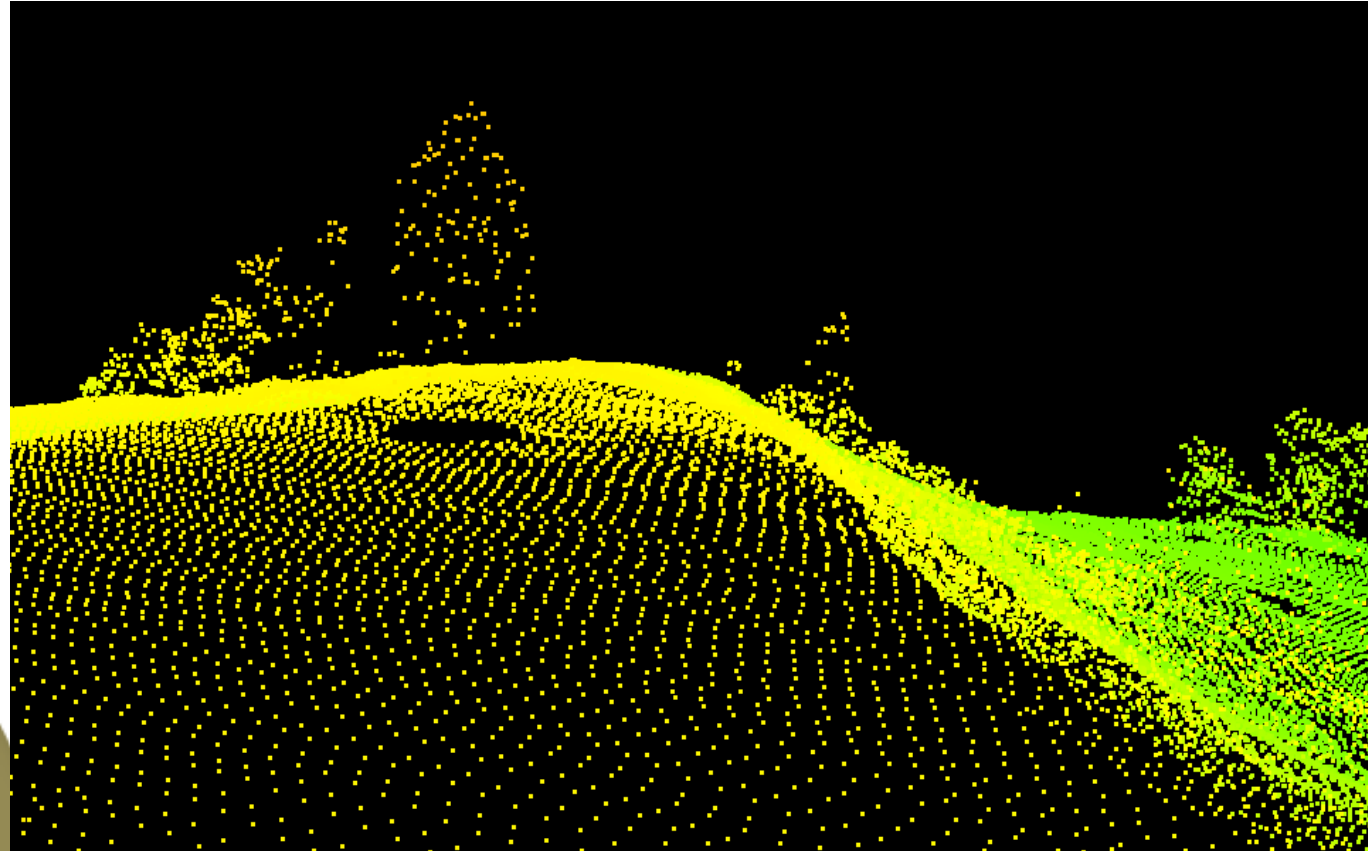
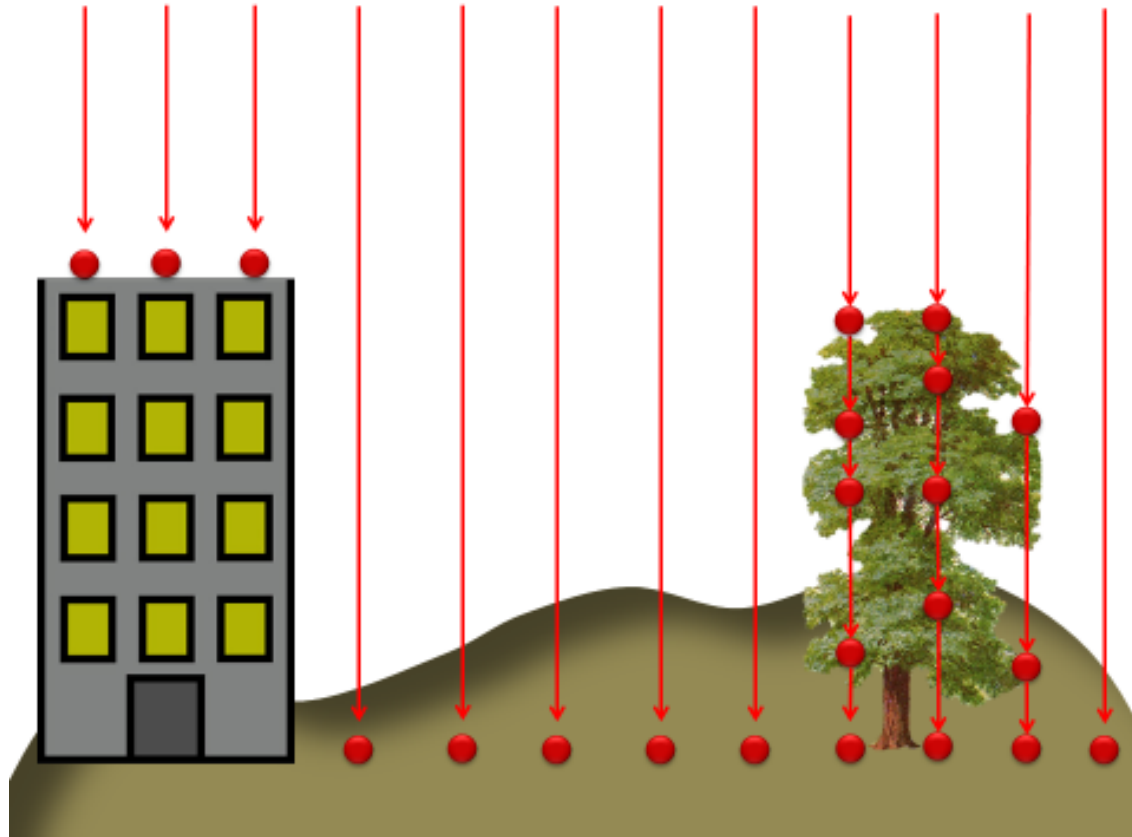


# FISCAL IMPACT MODEL



# DEVELOPMENT SUITABILITY

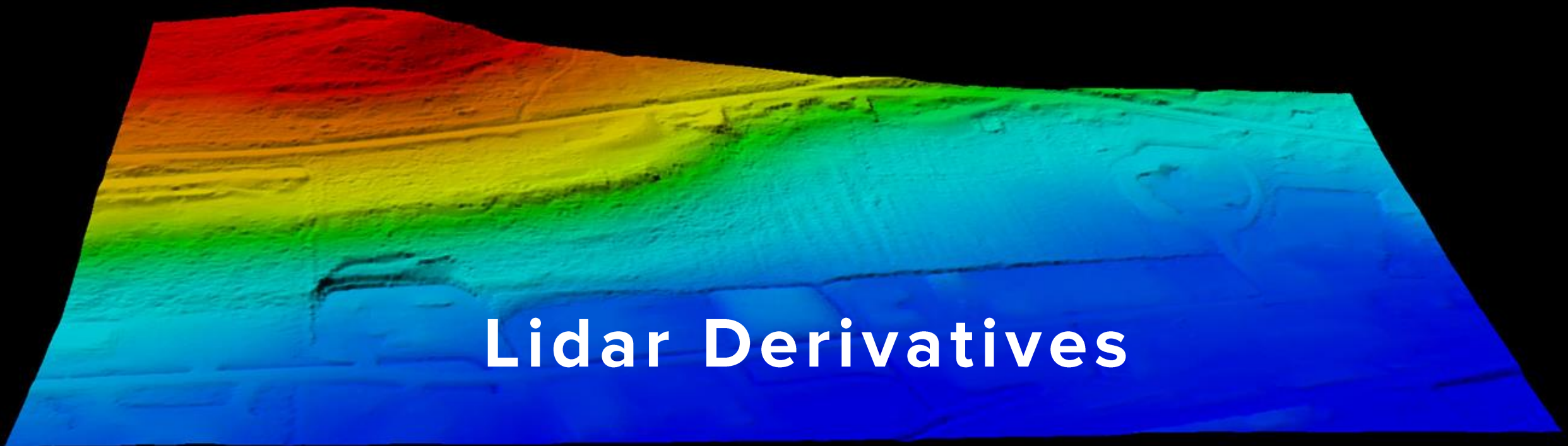
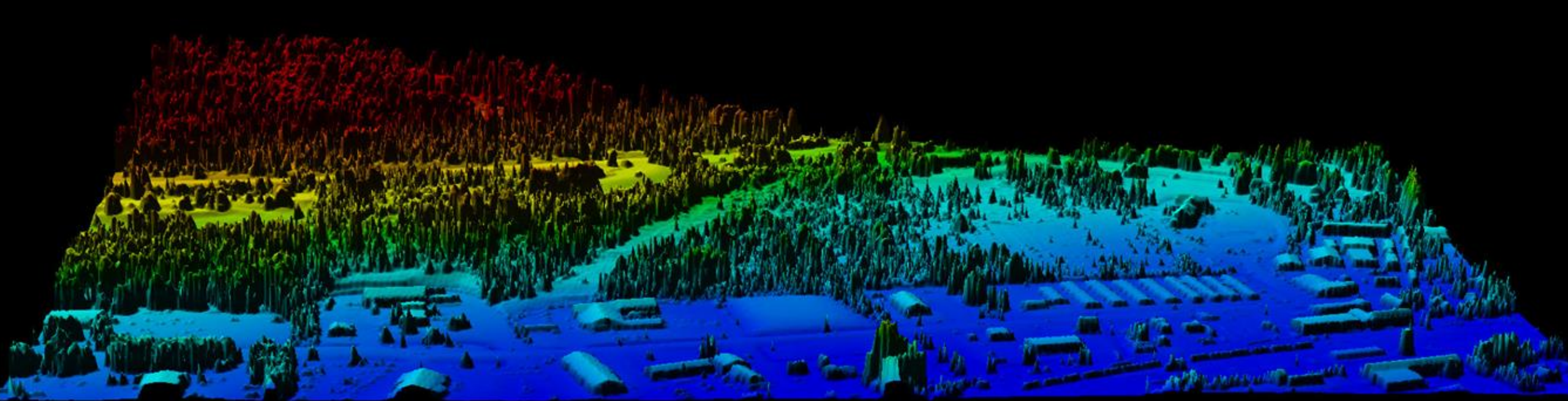
# Lidar









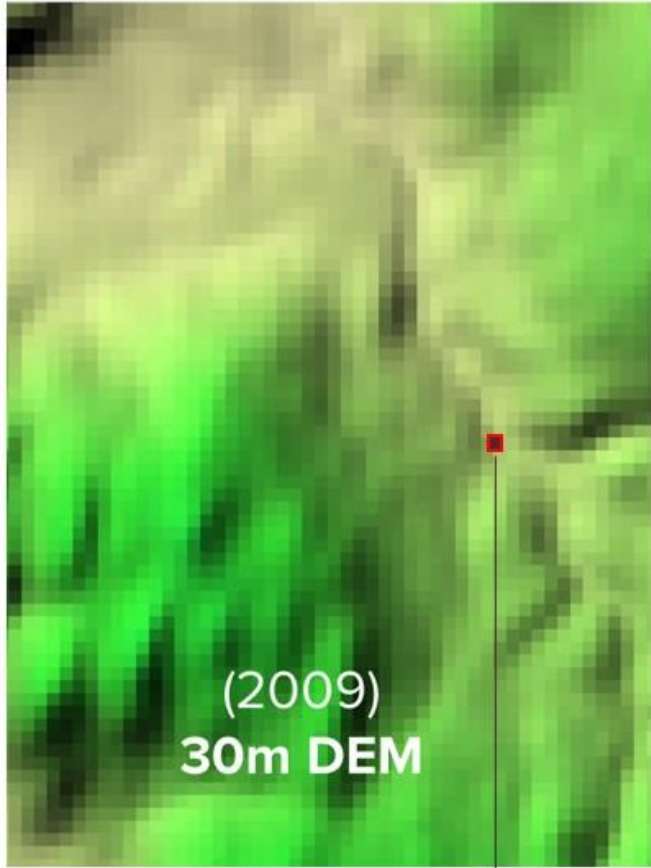


# Lidar Derivatives

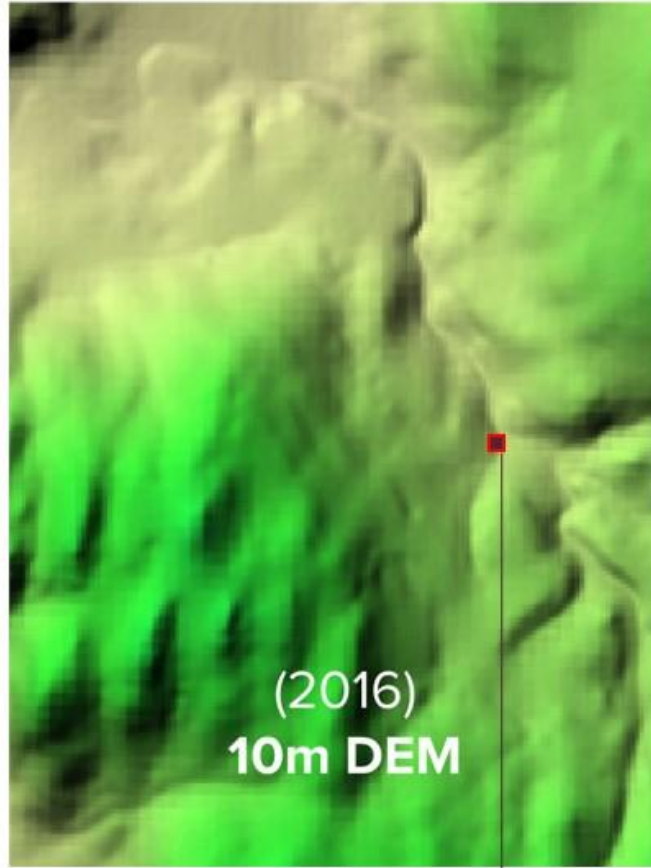


**National Elevation Dataset:** Reported vertical accuracy= 8 ft.

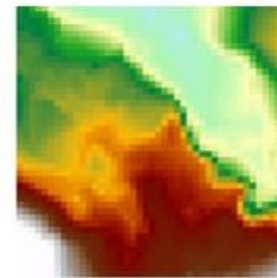
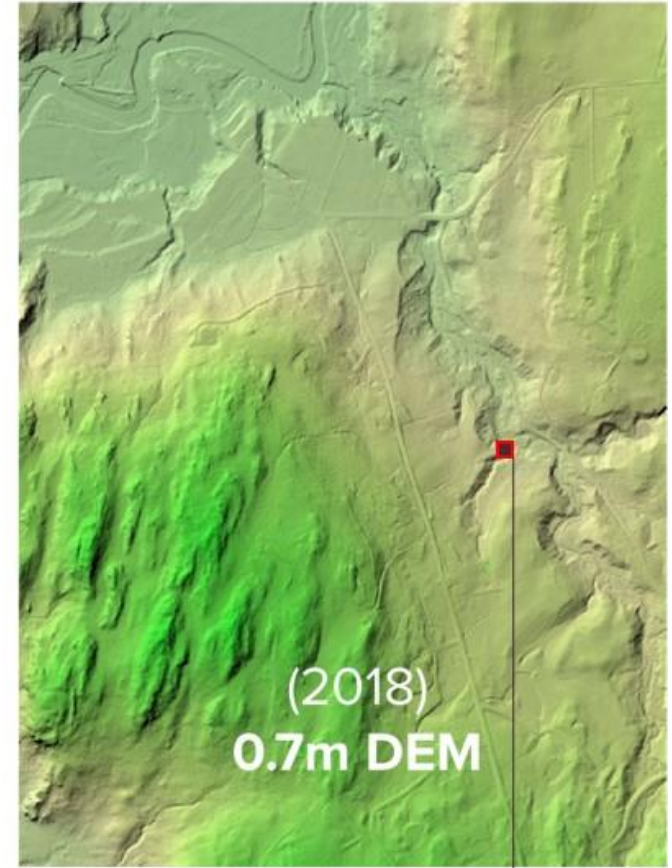
**LIDAR:** Vertical accuracy= 3.6 in.



Cell size: 9688 sq ft



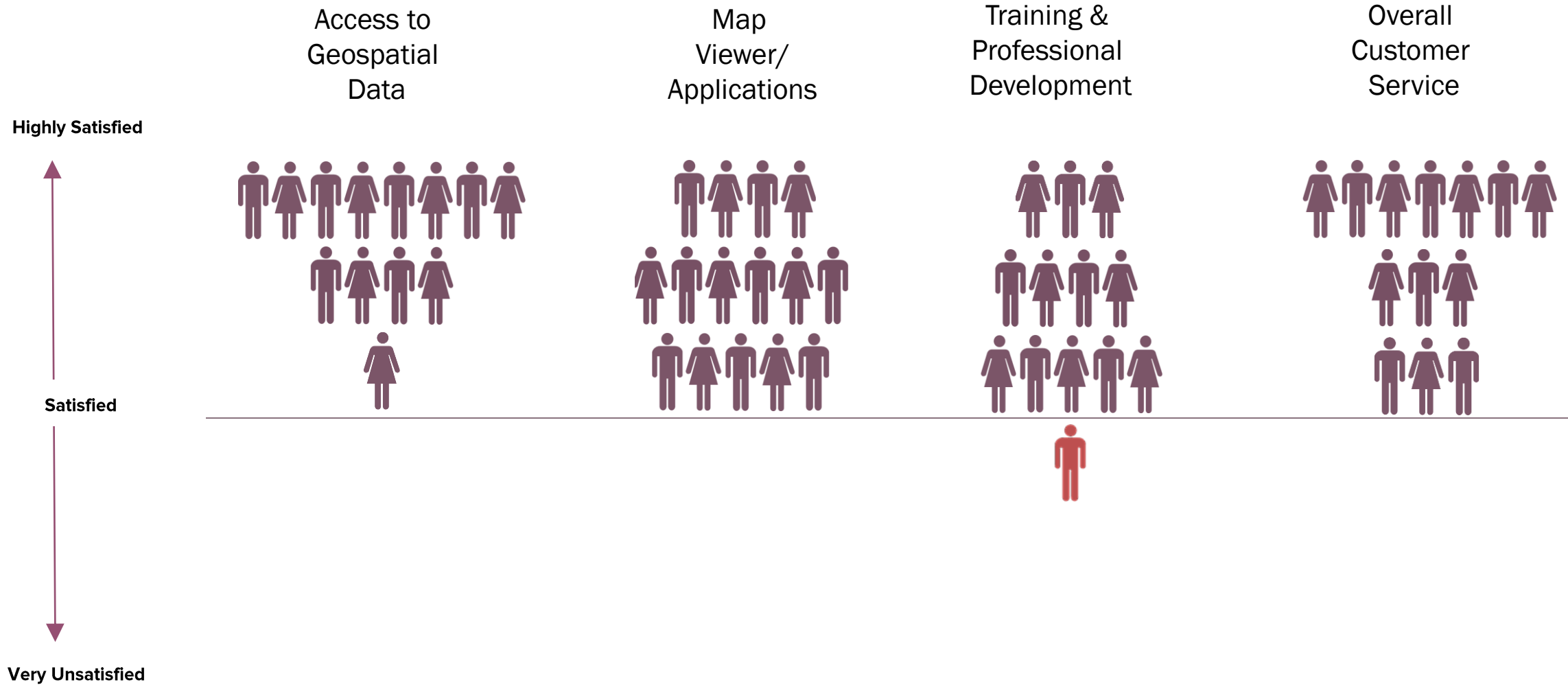
Cell size 1078 sq ft



Cell size 5.27 sq ft

# Customer Satisfaction

n 96

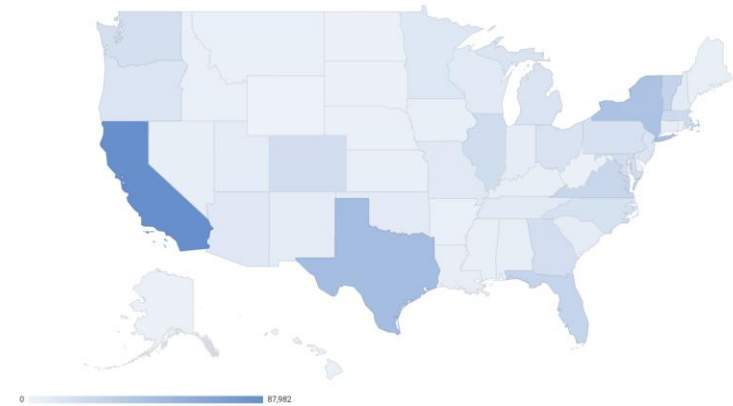




WATCH TIME (MINUTES)  
2,990,704\*

VIEWS  
448,131

VCGI Youtube as of 02/12/2018



YouTube Search [ ] [ ] [ ] [ ] VCGI



How To - Geocode Addresses in ArcGIS Pro with the Vermont E911 Geocoder

YouTube Search [ ] [ ] [ ] [ ] VCGI



How To - Geocode Addresses in ArcGIS Pro with the Vermont E911 Geocoder

# Thank You

[john.e.adams@vermont.gov](mailto:john.e.adams@vermont.gov)

